

A photograph of the Renaissance Paris Le Parc Trocadero Hotel's outdoor courtyard. The scene is bright and sunny, featuring several large, light-colored wicker sofas and armchairs arranged on a paved area. In the background, there are several large, lush green trees, including what appear to be palm trees. To the left, there are tables set up for dining with white tablecloths and chairs. Large, dark-colored patio umbrellas are open, providing shade. The hotel building is visible in the background, with its light-colored facade and windows. The overall atmosphere is one of a well-maintained and inviting outdoor space.

R

RENAISSANCE®

PARIS LE PARC TROCADERO HOTEL

Between the Eiffel Tower and the Champs-Élysées



PRACTICAL INFORMATION

LOCATION

Located few minutes walking from the Trocadéro (4 minutes), the Arc de Triomphe (10 minutes), the Champs Elysées (15 minutes) and the Palais des Congrès (15 minutes), you could easily enjoy of the cultural life and the Parisian activities. The district of La Défense is accessible in only 15 minutes by underground.

The 16th district of Paris, is a chic and calm district, ideal for families the avenue Victor Hugo is known to do your shopping. We invite you to discover the Ranelagh garden and the Bois de Boulogne, two green spaces where you could relax and spend good moments with your circle. Many museums and expositions are organized in close galleries or spaces. For more information, please ask about the cultural news and activities at the Conciergerie service.

ACCESS TO THE HOTEL

Transports

- Underground: Line 2 Victor Hugo stop or line 9 Trocadéro stop
- RER A Charles de Gaulle Etoile stop

Taxi/car:

- Airport Paris Charles de Gaulle : 18 mile, around 30 minutes
- Airport Paris Orly : 14 mile, around 25 minutes
- Gare du Nord (Eurostar, Thalys) : 4,7 mile, around 29 minutes
- Gare de Lyon : 4,9 mile, around 19 minutes



URBAN RESORT

Walking distance from the Arc de Triomphe, the Champs Elysées avenue and the Eiffel Tower, the Renaissance Paris Le Parc Trocadéro Hotel***** is a perfect place from where to go and explore the city's landmarks.

The Hotel is composed of four buildings set around an exotic garden of 1,200sqm, featuring fern trees from Tasmania, Japanese maples, magnolias...

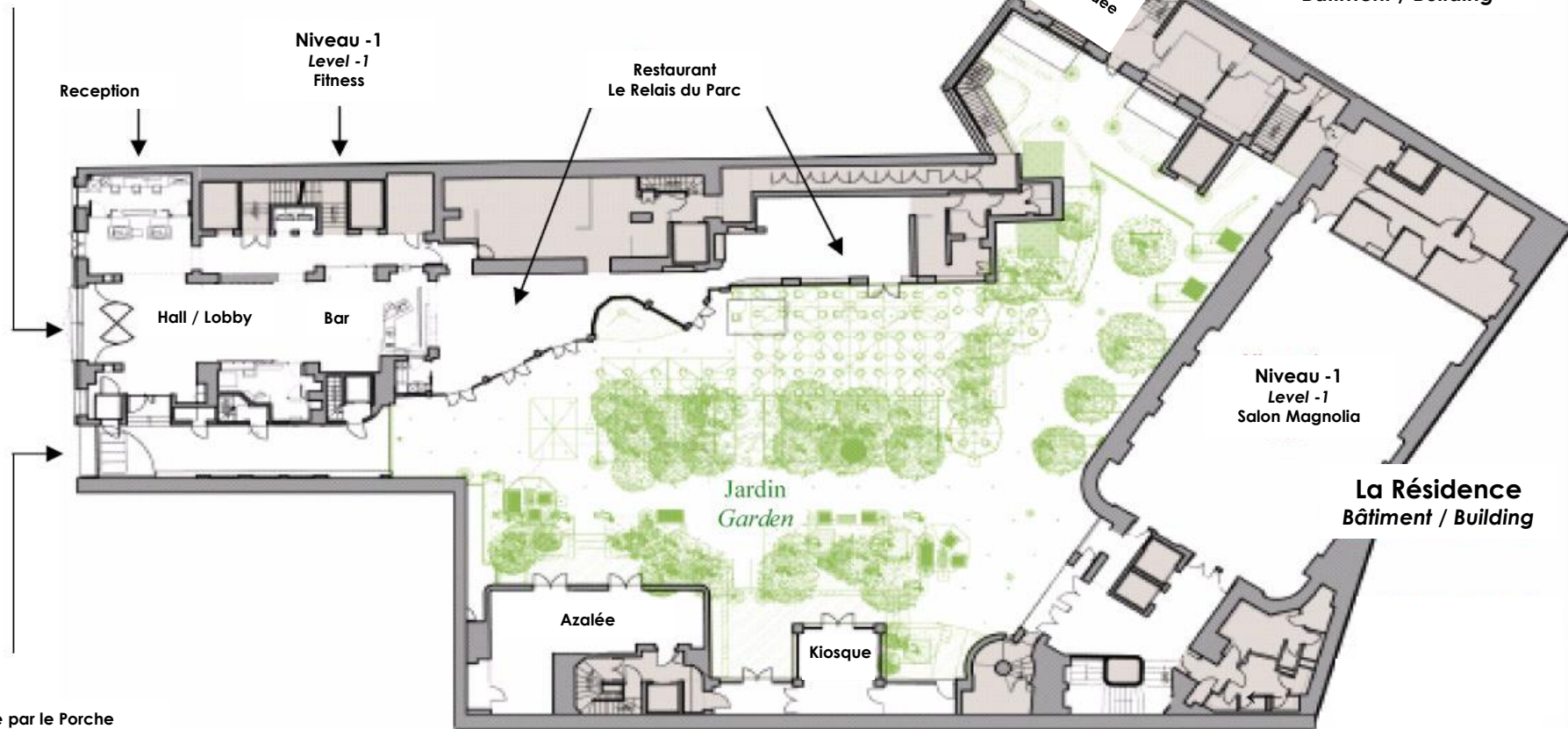
- **100 rooms and 22 suites** with a garden or city view; selected bedrooms with a glimpse over the Eiffel Tower
- **“Le Relais du Parc bistro chic”**: Traditional French cuisine
- **G’Bar & Lounge**: 1st Gin bar in France. Live music every Saturday* from 7.30pm to 10pm. Winter terrace
- **Conferences facilities:**
 - 2 function rooms with natural daylight and a direct access to the terrace;
 - the grand ballroom with majestic staircase and crystal chandeliers for unique events

* The program can be modified without noticing

Entrée principale de l'Hôtel
Main Entrance

L'Hôtel
Bâtiment / Building

Le Pavillon
Bâtiment / Building



Entrée par le Porche
Porch Entrance

La Demeure
Bâtiment / Building



122 BEDROOMS & SUITES

Awarded the "Interior Design of the Year for Bedrooms and Bathrooms" at the "European Hotel Design Awards 2011", the Hotel, designed by Jean-Philippe Nuel, mirrors both the layout and feeling of its beautiful private garden in the interior design within.

- 37 "Superior" Rooms
- 42 "Superior" Rooms Garden View
- 21 "Prestige" Rooms Garden View
- 4 Junior Suites
- 2 Eiffel Tower View Junior Suites
- 12 Leisure Junior Suites
- 4 Executive Suites
- 1 Le Parc Suite

SUPERIOR ROOM



SUPERIOR ROOM GARDEN VIEW



PRESTIGE ROOM GARDEN VIEW





OUR ROOMS

Main Information

- Capacity: 2 to 3 people
- 1 queen, 1 king bed, or 2 twin beds
- Bathroom in marble with an anti-steam mirror
- Bath or shower
- Bathrobe and slippers
- Working space
- Air-conditioning
- Minibar
- Safe deposit-box
- Courtesy tray and kettle
- Ironer and ironing table
- Hair dryer
- LCD Screen
- Phone with voicemail
- Ipod station
- High Speed Internet WIFI
- English adaptor

Services

- Pillowtop mattress, featherbed and duvet
- Newspaper delivered to room on request
- Evening turndown service
- Conciergerie Service «Clefs d'Or»
- Laundry service
- Valet service
- Room service 24/24
- Free access to the fitness center opened 24/24

Layout and facilities

Superior Room: 20-23 sqm

- Maximum capacity: 3 people
- Crib or extra bed available on request
- Communicating rooms on request
- 4 organised rooms for disabled people which have a direct access to the garden

Superior Room Garden View: 23-25 sqm

- Maximum capacity: 2 people
- Communicating rooms on request

Prestige Room Garden View: 25-28 sqm

- Maximum capacity: 3 people
- Crib or extra bed available on request
- Communicating rooms on request

JUNIOR SUITE





EIFFEL TOWER VIEW JUNIOR SUITE

LEISURE JUNIOR SUITE





OUR JUNIOR SUITES

Main Information

- Capacity: 2 to 4 people
- Bathroom with an anti-steam mirror Italian bath or shower
- Bvlgari beauty products
- Bathrobe and slippers
- Work desk
- Living room space
- Air-conditioning
- Minibar
- Safe deposit-box
- Courtesy tray and kettle
- Nespresso coffee machine
- Ironer and ironing table
- Hair dryer
- LCD Screen
- Phone with voicemail
- Ipod station
- High Speed Internet WIFI
- English adaptator

Services

- Pillowtop mattress, featherbed and duvet
- Newspaper delivered to room on request
- Evening turndown service
- Conciergerie Service «Clés d'Or»
- Laundry service
- Valet service
- Room service 24/24
- Free access to the fitness center opened 24/24

Layout and facilities

Junior Suite: 30-35 sqm

- Garden view or Paris' rooftops
- Maximum capacity: 3 people
- 1 queen or a king size bed
- Crib or extra bed available on request
- Communicating rooms on request

Eiffel Tower View Junior Suite: 30-35 sqm

- Maximum capacity: 3 people
- 1 queen size bed
- Bath
- Crib or extra bed available on request

Leisure Junior Suite: 30-35 sqm

- Maximum capacity: 4 people
- Garden view or Paris' rooftops
- 1 queen, 1 king bed or 2 twin
- Convertible sofa

RENAISSANCE[®]
PARIS LE PARC TROCADERO HOTEL

EXECUTIVE SUITE





EXECUTIVE SUITE

Main Information

- 40-45 sqm
- Capacity: 2 to 4 people
- 3 suites in duplex and 1 suite with 2 rooms
- 1 queen or king bed and a convertible sofa
- Crib or extra bed available on request
- Bathroom with an anti-steam mirror
- Bath or Italian shower
- Bvlgari beauty products
- Bathrobe and slippers
- Work desk
- Living room space
- Air-conditioning
- Minibar
- Safe deposit-box
- Courtesy tray and kettle
- Nespresso coffee machine
- Ironer and ironing table
- Hair dryer
- LCD Screen
- Phone with voicemail
- Ipod station
- High Speed Internet WIFI
- English adaptor

Services

- Pillowtop mattress, featherbed and duvet
- Newspaper delivered to room on request
- Evening turndown service
- Conciergerie Service «Clés d'Or»
- Laundry service
- Valet service
- Room service 24/24
- Free access to the fitness center opened 24/24

LE PARC SUITE





LE PARC SUITE

Main Information

- 52 sqm
- Capacity: 2 people
- 1 king size bed
- Crib available on request
- Bathroom with an anti-steam mirror
- Bath and shower
- Bvlgari beauty products
- Bathrobe and slippers
- Living room space
- Work desk/Library
- Dressing
- Balcony with garden view
- Air-conditioning
- Minibar
- Safe deposit-box
- Courtesy tray and kettle
- Nespresso coffee machine
- Ironer and ironing table
- Hair dryer
- LCD Screen
- Phone with voicemail
- Ipod station
- High Speed Internet WIFI
- English adaptor

Services

- Pillowtop mattress, featherbed and duvet
- Newspaper delivered to room on request
- Evening turndown service
- Conciergerie Service «Clés d'Or»
- Laundry service
- Valet service
- Room service 24/24
- Free access to the fitness center opened 24/24

R

RENAISSANCE®
PARIS LE PARC TROCADERO HOTEL

LE RELAIS DU PARC RESTAURANT





LE RELAIS DU PARC RESTAURANT

A moment of intense testing in a warm atmosphere

"Le Relais du Parc Bistro chic " offers a traditional and gourmet cuisine.

The Chef, Stéphane Duchiron, suggests products of quality to satisfy the hardest palates offering a selection of savors associated to a creative touch.

The garden is an initiation to relaxation and the best place to have a peaceful lunch or a moonlight dinner. Every Sunday, come and enjoy our Brunch from 12:30pm to 3pm.

Our Chef has begun cooking in the famous Grégoire Ferrandi school. Apprentice at Guy Savoy's establishment, then at Jacques Lameloise's, he became the Second Chef of Roland Durand.

In 2006, he has opened his own restaurant "Les Fougères" in Paris. Since 2013 he runs the kitchen of Le Relais du Parc.

In 2007, he won the Jacquart price of "Gastronomy Elevating Star".

In 2014, he received the price of "The Best Renaissance Chef in Europe".

R

RENAISSANCE®
PARIS LE PARC TROCADERO HOTEL



G'BAR & LOUNGE

With a selection of 30 gin references, the "G'bar & Lounge" is the first gin bar in France. The Bartender invites you to discover or re-discover this product of excellence perfectly prepared in tasty cocktails such as "Flower Power @ Le Parc" our speciality.

Every Saturday from 7:30pm to 10pm, the G'Bar & Lounge organizes its musical afterwork "Discovery events" in the bar or in the garden (program can change).

Throughout the year, enjoy our terrace to savor our creations cocktails according to seasons.



“ DISCOVERY ” EVENTS

Creations, innovations, wake-up of senses...

All over the year, the Renaissance Paris Le Parc Trocadero Hotel organizes events of discoveries. Musical evenings, cooking or cocktails courses, sculptures or painting expositions, gastronomical theme, activities and animations will transport you to share an unique experience with your family, friends or colleagues.

Embark with us for new adventures in order to discover original experiences, live special moments ... to travel in the Renaissance universe.

KIOSQUE MEETING ROOM



AZALEE MEETING ROOM



MAGNOLIA MEETING ROOM





OUR MEETING ROOMS

With 310 square meters of conference facilities, the Renaissance Paris Le Parc Trocadéro Hotel is also a perfect place for the organization of meetings. Three of the five function rooms offer natural daylight and direct access to the garden, a setting which will take you out of time and space in Paris .

Azalée function room

This functional room of 50 sqm is ideally set-up in L to organise your meetings on one side and the break or the lunch syndicate room on the other side.

Possibility to create 2 rooms of under-commissions thanks to the removable partition wall. The direct access on the garden enables you to enjoy beaks and cocktails outside.

Set up	Number of people
Theater	N.A
Classe	N.A
U-Shape	N.A
Rectangular table	N.A
Ovale table	N.A
Cabaret	N.A
Cocktail	30
3 course meal	30
Stand-up Finger buffet	30
Sit-down Buffet	30

Kiosque function room

An elegant space of 20 sqm ideal for a committee of direction or for private meals. Its privative terrace offers a world of serenity to explore.

Set up	Number of people
Theater	N.A
Classe	N.A
U-Shape	N.A
Rectangular table	8
Ovale table	8
Cabaret	N.A
Cocktail	15
3 course meal	10
Stand-up Finger buffet	15
Sit-down Buffet	15



OUR MEETING ROOMS

Magnolia function room

Entirely renovated in 2012, magnolia, the biggest function room (240 sqm), ca, accomodate 80 people for meetings, 300 in theater style and up tp 320 for cocktails parties in a contemporary setting inspired by the garden's spirit. The possibility to transform the room with the nouable wall allows to planify products launching but also the organisation of events and weddings.

Located on the basement, the floor is totally privatised. As soon as the weather allows it, breaks and meals are organized on the shady terrace.

Orchidée function room

Located in Pavillon building, discretely settled in the garden, this new function room of 16m² is ideal for your confidential meetings.

It can host 10 guests for seated lunch or dinner and up to 12 guests in cocktail. Thanks to its closeness to the garden coffee breaks and cocktail can be set up outdoor.

	Theater	Classe	U-Shape	Rectangular table	Ovale table	Cabaret	Cocktail	3 course meal	Stand-up Finger buffet	Sit-down Buffet
Magnolia 1	180	80	40 double U: 60	48	40	60	200	140	150	120
Magnolia 2	80	50	30	38	30	40	100	60	80	60
Magnolia 1+2	300	150	70 double U: 100	68	60	120	320	180	210	170

Set up	Number of people
Theater	N.A
Classe	N.A
U-Shape	N.A
Rectangular table	10
Ovale table	10
Cabaret	N.A
Cocktail	12
3 course meal	10
Stand-up Finger buffet	12
Sit-down Buffet	10

FITNESS CENTER



R

RENAISSANCE®

PARIS LE PARC TROCADERO HOTEL

55-57 Avenue Raymond Poincaré | 75116 Paris, France

T 01.44.05.66.66 | F 01.44.05.66.00 | E leparc.sales@renhotels.com

[RenaissanceLeParcTrocadero.fr](https://www.renaissanceleparctrocadero.fr)

[Facebook.com\Renleparc](https://www.facebook.com/Renleparc)